



3 GUYLINE WINCHES

LIGHTWEIGHT LATTICE TUBE CONSTRUCTION

TURNABLE TOWERHEAD



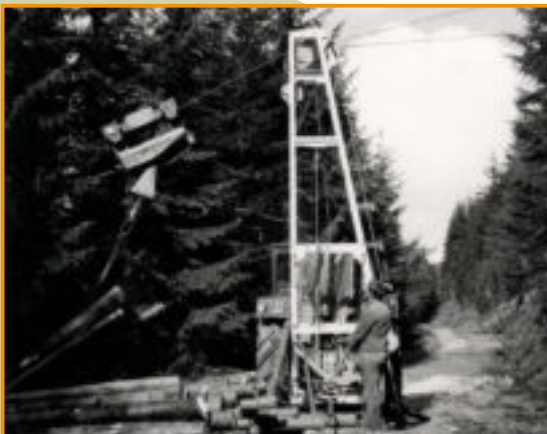
SINGLE-HAND OPERATION



ROBUST GEAR UNIT



HYDRAULIC TOWERLIFT



1979



1980



1986

The **K 300-T** is an internationally proven tractor / 3-point mounted yarder for uphill logging. It assures easy handling, reliable and rugged design, as well as short set up and dismantling times.

SPECIFICATIONS

LINE CAPACITY	STANDARD	ALTERNATIVE	LINE PULL
Skyline	1650' Ø 9/16" · 500 m Ø 14 mm swaged	1320' Ø 5/8" · 420 m Ø 15 mm	Skyline 4.48 t · 44 kN
Mainline	2260' Ø 5/16" · 550 m Ø 8 mm swaged	1480' 3/8" · 450 m Ø 9,5 mm swaged	Mainline 1.83 t · 18 kN
Guyline	3x100' Ø 5/8" / 2x30' 3x30 m Ø 16 mm / 2x10 m extensions	—	

LINE SPEED	
Without payload	user defined by brake
With payload	up to 705 ft/min · 215 m/min

POWER STATION	TOWER
· P.T.O. of the tractor (mechanically driven)	Standard 24' · 7.2 m
· Engine power of the tractor: minimum 49 HP (36 kW)	Tower extension 28' · 8.4 m
· Hydraulically operated single disk dry clutches on both drums	Operating range on the left side of the yarder

FEATURES

- Three-point attachment
- Most built yarder of all times
- Longlife components
- With CE-compliant integrated deadman circuit
- Often proven because of the robust and simple design
- Foldable tower 1.2 m (optional)
- Easy maintenance
- Worldwide in use
- Compact and reliable

CARRIAGE

	SKA 1 	SKA 1-Z 
	Ø 1/2"-1" · Ø 12-24 mm	Ø 1/2"-1" · Ø 12-24 mm
	Ø 5/16"-7/16" · Ø 8-11 mm	Ø 5/16"-7/16" · Ø 8-11 mm
	approx. 350 lbs · 160 kg	approx. 420 lbs · 190 kg
	approx. 1.5 t	approx. 1.5 t



1992

1998

TODAY