



P60

P75

www.kollergmbh.com

...AND IT'S DONE!

ADVANTAGES

The robust solution for alpine logging - the KOLLER processor head.
Wide carrier range from mountain harvester up to excavator.

Features of the P60 / P75:

- ✓ Independent large grapple - no blunting of delimbing knives while stacking
- ✓ Grapple with parallel motion - logs can easily be picked out of the pile
- ✓ High quality delimbing
- ✓ Diameter and tree species dependent continuously variable pressure of delimbing knives and feed rollers
- ✓ Huge feed force and traction
- ✓ Compact & solid construction
- ✓ Ideal center of gravity - head stays leveled even with activated tilt float
- ✓ Mechanical limit stops for all moving parts
- ✓ Easy maintenance
- ✓ Large feed roller diameter
- ✓ Large top saw cutting diameter
- ✓ World wide proven and tested head control with intuitive touch-screen
- ✓ Operator dependent assignment of keys
- ✓ Precise length measurement
- ✓ Find end sensor
- ✓ Optional felling tilt arm (P60 only)



DIFFERENT ROTATORS CHOOSEABLE

LARGE SERVICE COVERS WITH SNAP CLOSURE

HIGH DELIMBING QUALITY

HUGE FEED FORCE AND TRACTION

FIND END SENSOR

LARGE TOP SAW CUTTING DIAMETER

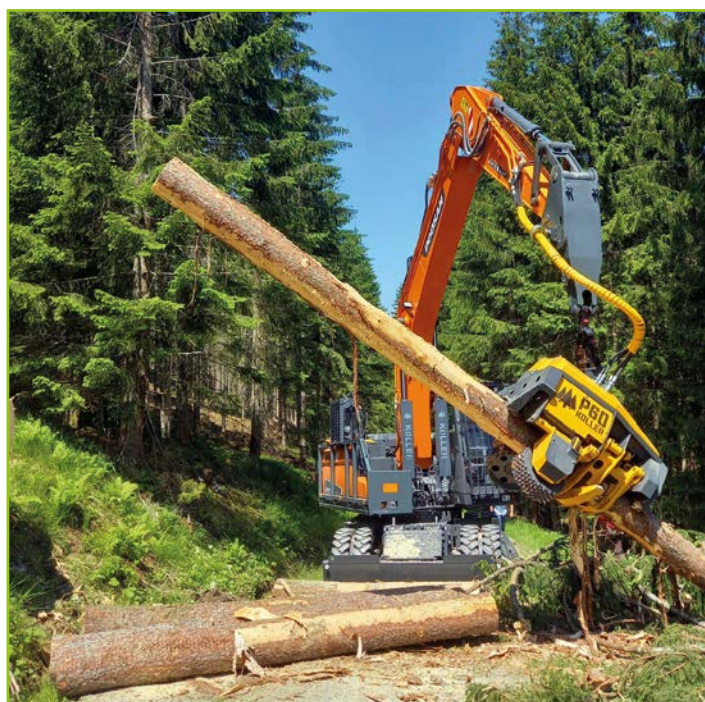
DIAMETER AND TREE SPECIES DEPENDENT PRESSURES

LOW WEAR OF DELIMBING KNIVES

INDEPENDENT LARGE GRAPPLE



PRACTICAL EXAMPLES



© Robert Spanning Redaktion Holz-Kurier

VIDEOS



P60 - TECHNICAL SPECIFICATIONS

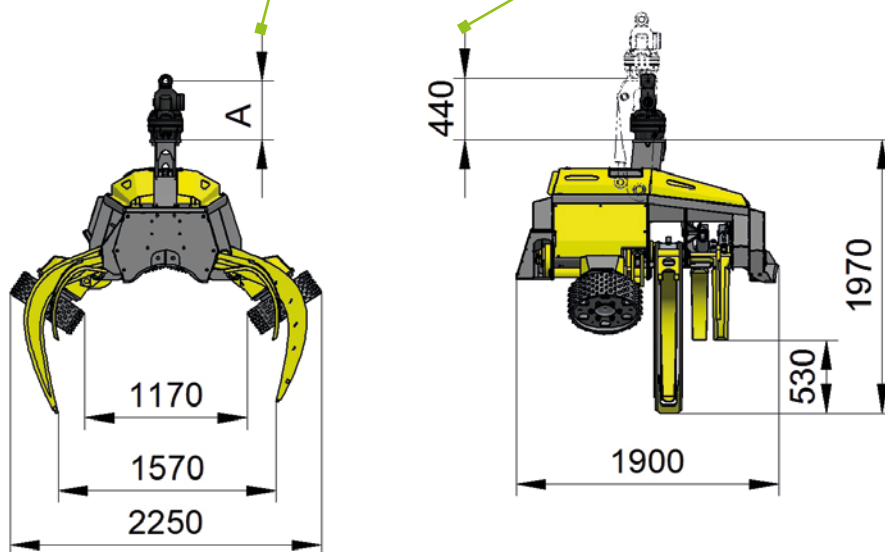
Max. grapple opening	1570 mm
Grapple cross section	0,7 m ²
Cutting diameter	700 mm
Delimbing diameter	70 - 620 mm
Delimbing knives	1 fixed, 4 moving
Feeding	4 rollers
Feed force	max. 50 kN
Feed speed	max. 5 m/s
Weight excl. rotator	1600 kg
Carrier size	from 110 kW / 20 t
Optimal hydraulic supply	280 - 300 l/min 280 - 330 bar
Top saw cutting diameter	420 mm



P60 - DIMENSIONS

**MEASUREMENT A:
ROTATOR DEPENDING**

**HIGHT DIFFERENCE BETWEEN
HARVESTER AND PROCESSOR**



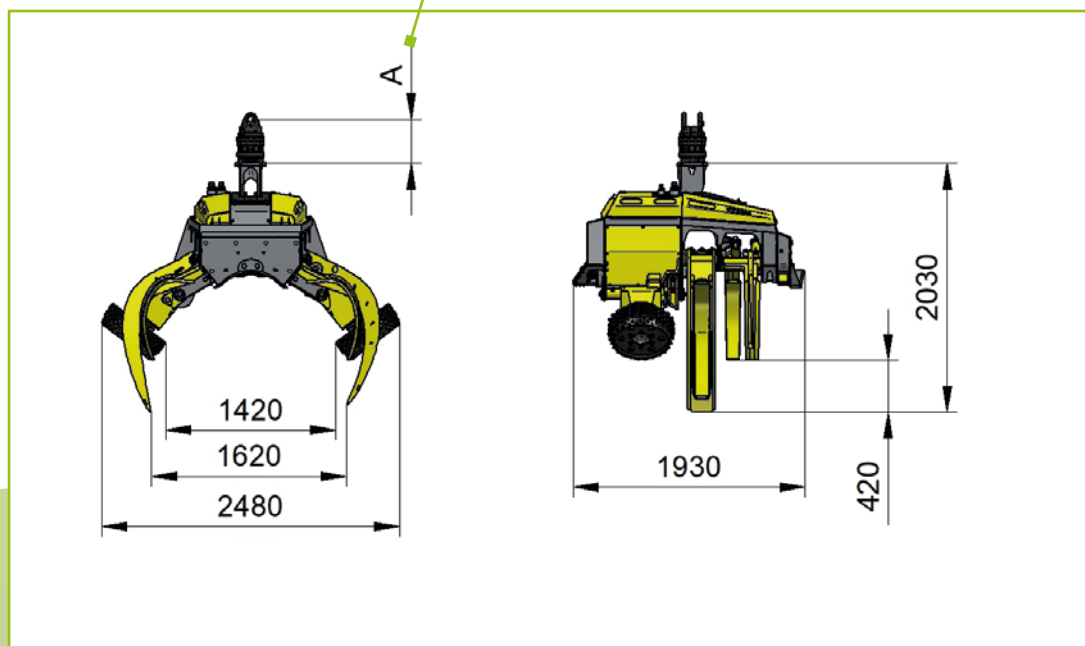
P75 - TECHNICAL SPECIFICATIONS

Max. grapple opening	1630 mm
Grapple cross section	0,8 m ²
Cutting diameter	820 mm
Delimbing diameter	80 - 720 mm
Delimbing knives	1 fixed, 4 moving
Feeding	3 rollers
Feed force	max. 60 kN
Feed speed	max. 4 m/s
Weight excl. rotator	1850 kg
Carrier size	from 110 kW / 22 t
Optimal hydraulic supply	300 - 400 l/min 300 - 330 bar
Top saw cutting diameter	420 mm



P75 - DIMENSIONS

MEASUREMENT A: ROTATOR DEPENDING



WHAT DO OUR CUSTOMERS SAY?



MARTIN W.

„The independent, large grapple enables to stack the logs easily even in harsh conditions.“

MAX H.

„The P60 is unbeatable in heavy-branched wood!“



The quality of our products is the result of experience and continuous development since 1961. By using high quality components and the know-how of our employees, we can guarantee high productivity and good value stability.

Your local dealer

Koller GmbH

Kufsteiner Wald 26
6334 Schwoich / Kufstein

T: +43 5372 63257

www.kollergmbh.com



/KollerForsttechnik



/KollerForsttechnik



/koller_forsttechnik